

## THE BREED STANDARDS

### Alpine

The Alpine is a French breed that is medium to large in size, with upright ears, and a variety of colors. The hair is medium to short and the face is straight. Alpine colors are described by using the following terms:

Cou Blanc (coo blanc) – “white neck” –white front quarters and black hindquarters with back or gray markings on the head.



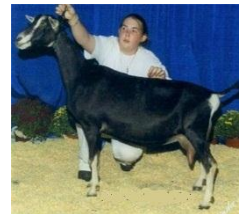
Cou Clair (coo clair) – “clear neck” – front quarters are tan, saffron, off-white, or shading to gray with back hindquarters.



Cou Noir (coo nwah) – “black neck” – black front quarters and white hindquarters.



Sundgau (sundgow) – black with white markings such as underbody, facial stripes, etc.



Pied – spotted or mottled. (no picture)

Chamoisee (shamwahzay) – brown or bay, characteristic markings are black face, dorsal stripe, feet and legs, and sometimes a martingale running over the withers and down to the chest. Spelling for the male is chamoise.



Two-Tone Chamoisee – light front quarters with brown or gray hindquarters. This is not a cou blanc or cou clair, as these terms are reserved for animals with black hindquarters.



Broken Chamoisee – a solid chamoisee color broken with another color by being banded or splashed, etc.



Any variation in the above patterns broken with white should be described as a broken pattern such as a broken cou blanc.

### **LaMancha**

The LaMancha goat was developed in the US. It has excellent dairy temperament and is an all-around sturdy animal that can withstand a great deal of hardship and still produce. Through official testing this breed has established itself in milk production with high butterfat. The LaMancha face is straight with the ears being the distinctive breed characteristic. There are two types of LaMancha ears.

- The “gopher ear” has an approximate maximum length of one inch but preferably is non-existent and with very little or no cartilage. The end of the ear must be turned up or down.
- The “elf ear” has an approximate maximum length of two inches or less, and the end of the ear must be turned up or down and cartilage shaping the ear is allowed.



In does, one type of ear has no advantage over the other. However, bucks must only have the “gopher ear.” Any color or combination of colors is acceptable with no preference. The hair is short, fine, and glossy.

### **Nigerian Dwarf**

The Nigerian Dwarf is a miniature breed originating in West Africa and developed in the US. The balanced proportions of the Nigerian Dwarf give it the appearance of the larger breeds of dairy goats, but the does stand no more than 22.5” and the bucks no more than 23.5” at the withers. Any color or combination of colors is acceptable. The medium length ears are erect and alert. The face is either straight or dished, and the hair is short and fine.



### **Nubian**

The Nubian is relatively large and of mixed Asian, African, and European origin. They are known for milk with high butterfat. The head is the distinctive breed characteristic, with the facial profile between the eyes and the muzzle being strongly convex. The ears are long (extending at least one inch beyond the muzzle when held flat along the face), wide, and pendulous. They lie close to the head at the temple and flare slightly out and well forward at the rounded tip, forming a “bell” shape. The ears are not thick, with the cartilage well defined. The hair is short, fine, and glossy. Any color or colors, solid or patterned, is acceptable.



### **Oberhasli**

The Oberhasli is a Swiss breed. It is of medium size. Its color is chamoisee. Does may be black but chamoisee is preferred. Chamoisee is described as: Bay – ranging from light to a deep



red bay with the latter most desirable. A few white hairs through the coat and about the ears are permitted. Markings are to be: two black stripes down the face from above each eye to a black muzzle; forehead nearly all black, black stripes from the base of each ear coming to a point just back of the poll and continuing along the neck and back as a dorsal stripe to the tail; a black belly and light gray to black udder; black legs below the knees and hocks; ears black inside and bay outside. Bucks often have more black on the head than does, black whiskers, and black hair along the shoulder and lower chest with a mantle of black along the back. Bucks frequently have more white hairs through the coat than does. The face is straight or dished.

### **Saanen**

The Saanen is a Swiss breed. It is medium to large in size with rugged bone. Does should be feminine, however, and not coarse. Saanens are all white or light cream in color, with white preferred. Spots on the skin are not discriminated against. Small spots of color on the hair are allowable, but not desirable. The hair should be short and fine, although a fringe over the spine and thighs is often present. Ears should be erect and alertly carried, preferably pointing forward. The face should be straight or dished. A tendency toward a Roman nose is discriminated against.



### **Sable (No picture)**

The Sable is medium to large in size with rugged bone. Does should be feminine, however and not coarse. Their hair is short; ears should be erect and alertly carried, preferably pointing forward. The face should be straight or dished. The Sable, either purebred or American, must be the offspring of purebred or American Saanens, Sables, or Experiments (when of wholly purebred or American Saanen bloodlines). The Sable may be any color or combination of colors, solid or patterned, except solid white or light cream. This includes goats who are basically white but have dark spots, ticking, etc., which preclude them from entry into the Saanen herd books.

### **Toggenburg**

The Toggenburg is a Swiss breed. This breed is of medium size. The hair is short to long in length, soft, and fine. Its color is solid varying from light fawn to dark chocolate with no preference for any shade. Distinct white markings are as follows: white ears with dark spot in middle; two white stripes down the face from above each eye to the muzzle, hind legs white from hocks to hooves; forelegs white from knees downward with dark vertical stripe below knee acceptable; a white triangle on each side of the tail; white spot may be present at the root of the wattles or in that area if no wattles are present. Varying degrees of cream markings instead of pure white is acceptable, but not desirable. The ears are erect and carried forward. Facial lines may be dished or straight, but never Roman.



[Main Menu](#)